

NABARD TDF WADI PROGRAMME



PROJECT COMPLETION REPORT KUSHALGARH, DISTRICT - BANSWARA APRIL 2007 TO MARCH 2013

Submitted by BAIF - RRIDMA

"G" Block, Near Community Hall, Sector No.14 Hiran Magri, Udaipur

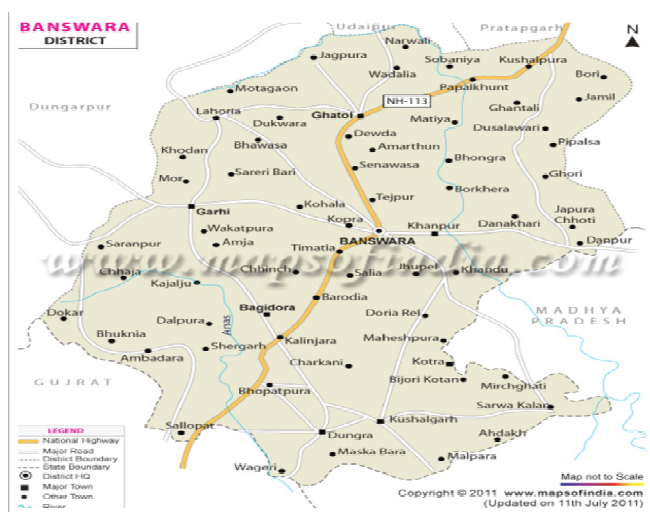
Tel: 91-294- 2640133 Email: rridma@gmail.com

PROJECT COMPLETION REPORT
NABARD TDF WADI PROGRAMME

AN INTRODUCTION -

1	Name of Project	:	NABARD TDF WADI DEVELOPMENT PROGRAMME Kushalgarh
2	Reference No	:	
3	Type of Project	:	AGRICULTURE BASED
4	Duration of Project	:	2007-14 (7 years)
5	Report submitted by	:	BAIF - RRIDMA
6	Report submitted to	:	Chief General Manager, NABARD, JAIPUR
7	Project Area	:	16 villages of Kushalgarh Cluster, Kushalgarh Panchayat Samiti, District - Banswara
8	No. of beneficiaries	:	1000 Tribal Families
9	Cost of Project	:	Rs. 272.86 LACS
10	Objectives of Project	:	Sustainable Development of Tribal Families through Horticulture Development Programme was the major objective of the Project.
11	Major Project Activities	:	1. Livelihood Programme (a) Horti-Forestry & Improved Agriculture (b) Water Management (c) Soil Conservation/Land Development 2. Training & Capacity Building 3. Women Development 4. Health & Hygiene
12	Area covered under Horticulture Plantation	:	300 Hectare (1500 beeghas)

EXECUTIVE SUMMARY



NABARD TDF WADI Development Programme was initiated in Kushalgarh Cluster, District - Banswara year April 2007. Project was scattered in 16 villages of Kushalgarh Cluster. Project has phase wise covered 1000 families in last Seven years. 225 families were enrolled in year 2007-08, 238 families were enrolled in year 2008-09 & 537

families were enrolled in year 2009-10 in 16 villages i.e. Kalinjara, Badwas Choti, Badwas Badi, Borkhedi, Jhikli, Laxmanpura, Badlipada, Parnala. Charkali, Pali Choti, Pali Badi, Aamlipada, Naya Gaon, Rupa kheda, Vagol, Thummat .

Major Intervention as WADI, some other interventions was also specified to the participating families like Improved Agriculture, Water Resource Development, Community Health, Formation of Group and Women Empowerment.

Improved Seeds of different vegetables were used as an Intercropping of Vegetables in WADI with MANDAP which resulted a handsome amount of Income per month.

GENERAL INFORMATION OF PROJECT AREA

S.No.	PARTICULAR	STATUS (as on April 2007)	STATUS (as on March 2014)
1	No. of village	5	16
2	No. of gram Panchayat (Block Kushal garh, Distt. banswara)	02	05
3	Total no. of WADI families	225	1000
4	Total Population	4458	5320
5	ST Population	4105	5125
6	Other Population	353	195
7	No. of BPL Family	525	570

8	Open Wells	85	220
9	Tube Well (Borewell)	NIL	15
10	River Wakal	2	2
11	Nala/Spring	11	11
12	LAND		
12 (a)	Cultivated	1250 Beegha	2200 Beegha
12 (b)	Non Cultivated	3350 Beegha	2900 Beegha
12 (c)	Barren/ Beeda/Charnot	2100 Beegha	1800 Beegha
13	Kharif Crop	Urid, Rice, Chawla	Urid, Rice, Chawla, Rataloo, Arvi, Soyabeen
14	Rabi Crop	Wheat, Chana,	Wheat, Chana,
15	Zayad	Moong	Moong
16	Vegetables	Ladyfinger, Tomato, Chilly & Brinjal	Ladyfinger, Tomato, Chilly, Patta Gobhi, Lehsun, Onion & Brinjal
17	Rainfall	800 mm	850 mm
18	LIVESTOCK		
18 (a)	Cow	1250	1575
18 (b)	Ox	1650	2120
18 (c)	Buffalo	400	620
18 (d)	Goatry (Male+Female)	2940	3820
18 (e)	Poultry	3970	8565

19	SHG	NIL	42 SHG & 570 Members
20	WADI Tukdi	NIL	68 WADI TUKDI & 825 Members
21	Tribal Maha Samiti	NIL	01 Maha Samiti - 12 Members

STRATEGIC PLANNING FOR IMPLEMENTATION OF PROJECT

To implement any developmental programme an approach and strategy should be predefined, the same phenomenon has been here also and with the formation of different people's institutions and their respective responsibilities, the project was implemented. Following were the people's institutions-

- (1) 68 WADI Tukdi were formed and 825 members were added, these members are now taking care of WADI Management and maintenance. Field Worker arrange monthly meeting of WADI Tukdi.
- (2) Tribal Maha Samiti has been formed where 12 members from WADI Tukdi have been engaged in the same and representative of RRIDMA has been appointed as Secretary.
- (3) 42 Women Self Help Groups have been formed which are benefitting 570 Women.
- (4) These SHG's were offered with Training related to Improved Agriculture, Goat rearing, Livestock Development, Horticulture Development, WADI Management and Group Formation & Management.

HORTICULTURE DEVELOPMENT PROGRAMME - WADI

WADI MODEL - 25 Grafts of Amla + 5 Graft of Mango in first year, 15 Amla + 15 Mango in 2nd year and 15Mango + 15 Guava Plant in 3rd year with 100 Forestry Plants.

S.No.	FRUIT PLANT	NO. OF PLANTS	VARIETY
1	AMLA	12950	<i>N10, Krishna, Kanchan, NA-7</i>
2	MANGO	11550	<i>Dussehari, Kesar, Langra</i>
3	LEMON (gap filling)	1000	<i>kagji</i>
4	GUAVA	4000	<i>L-49</i>
5	FORESTRY	100000	<i>Sheesham, Neelgiri, Bamboo, Neem,,Apple, Havan, Ber, Shikakai, Gliricidia, Sagwan</i>

BATCH WISE SURVIVAL REPORT (HORTICULTURE)

BATCH	NO. OF WADI	NO. OF PLANTS GIVEN	NO. OF LIVE PLANTS	SURVIVAL %
I	225	6750	4803	71.15
II	238	8100	5625	69.44
III	537	15150	10248	67.64
TOTAL	1000	30000	20676	68.92

PLANT WISE SURVIVAL REPORT (FORESTRY)

BATCH	NO. OF WADI	NO. OF FORESTRY PLANTS GIVEN	NO. OF PLANTS LIVE	SURVIVAL %
I	225	22500	14175	63%
II	238	23800	15470	65%
III	537	53700	32757	61%
TOTAL	1000	100000	62402	62.40%



AMLA Production



Guava Production



Mango Production

FINANCIAL PROGRESS (SINCE APRIL 2007 TO Mar 2014)

S.No.	PROJECT INTERVENTIONS	SANCTIONED AMOUNT	TOTAL EXPENDITURE	% OFACHIEVEMENT
1	Horticulture Plantation & Maintenance	1,43,90,000	1,19 ,16,795	82.81
2	Soil Conservation	20,00,000	18,28,711	91.44
3	Water Resource Development	30,00,000	30,02,314	100.08
4	Health	4,99,000	4,53,652	90.91
5	Women Empowerment	12,07,000	8,83,122	73.17
6	Training & Capacity Building	7,65,000	7,39,930	96.72
7	Project Management Cost	46,72,000	43,45,484	93.01
8	Contingency	7,53,120	11,105	1.47
9	Total Grant Assistance	2,72,86,120	2,31,81,112	84.96
10	Total TDF Assistance	2,72,86,120	2,31,81,112	90.06

IMPORTANT INTERVENTIONS UNDER PROJECT

S.No.	MAIN INTERVENTION	NO.	FAMILIES
1	WRD	1000	1000
2	Land Development	910	910
3	Geti, Tagara, Phavda	1000	1000
7	Spray Pump	1000	1000
8	Smokeless Chulha	690	690
9	Improved cattle shed	65	65
10	Vegetable Kit	1000	1000
11	Plastic Pot	300	300
12	Chick	1600	80
13	Fiber Sheet	690	690
14	Maize Sheller	225	225
15	Secateurs	150	150

SALIENT FEATURES OF PO MODEL

1. APEX Body was formed by two selected members from each WADI TUKDI. 68 WADI TUKDI with 825 members & 42 SHG's with 570 members were formed.
2. 15th day of every month has been fixed for monthly meeting of APEX Body.
3. Labour Payment and material directly goes to participants via APEX Body.
4. Right from the first year of the programme APEX has been started giving Loan to SHG's.
5. APEX also worked on the project activities like construction of Improved Chulha & Other Activity.

QUALITY OF LIFE

This component is a package of variety of Interventions which are elaborated as follows-

WOMEN IN DEVELOPMENT - A series of interventions have been provided to a segment of project beneficiaries' women participants for the sake of their development. These were as below:

- (1) Drudgery Reduction Activities - Smokeless Chulha/ Improved Chulha was installed at 690 families.



, Improved Sickle/ Improved *Dantli* was given to 200 women, Maize Sheller to 217 families, Glass Roof Tiles/ Lighted Tiles were installed at 690 households,



Cattle shed, Demonstration, Improved Agriculture Equipment, 300 Plastic Water Crock to 300 families for drudgery reduction

- (2) Household Hygiene - To improve the General Health & reduce health expenses, behavioral change and Improved House hold hygiene and sanitation. To Maintain

Hygiene for drinking water a top for pot and small pot with handle to drink water was given to 300 families.

Community Health - Adolescent health education, Nutrition Demonstration, Well Chlorination, Deworming, Vaccination, Health Camp, Health Training Programme. Nutrition Demonstration Programme for Child and Women was organized and distributed at 10 places of project area. Health Awareness Campaign was a regular feature of project and it has benefitted many no. of Women and Children in project area. The campaign caters Vaccination for pregnant women, eye flu and anemia etc. With the help of Government Hospitals every year 4 health camps were organized.

Vegetable Kit of seasonal vegetables for kitchen garden was provided to 1000 participating families.

- (1) AWARDS- Best SHG & Best WADI Farmer's were awarded on Community Fair Annually by APEX Body.
- (2) Regular Training & Development as well as Capacity Building Programmes.

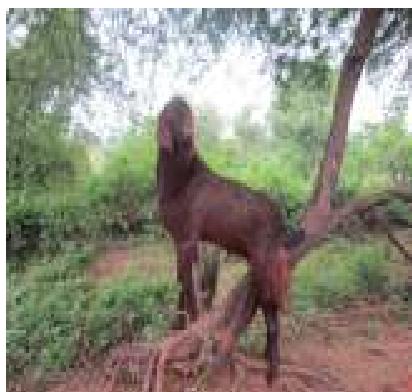
INCOME GENERATION ACTIVITIES

- (1) Income Generation Activities - Nursery Raising, Vermicomposting, Mango Grafting ,Collective purchase and Sale, Sewing & Tailoring, Vegetable Cultivation, Poultry Rearing & Goat raring etc.
- (2) Mandap Farming was started at 50 households in which 4x4x4 mtrs area was encircled and Wires were hanged on 6 Iron angles for cultivation of different vegetables. 4200 kg vegetables were produced and total sum of Rs. 84,000/-was received as Income.



(3) 80 families were provided with 5 weeks aged 20 chicks of Nirbheek Pratap Dhan variety as poultry rearing intervention.

(4) 14 Breeding Buck were provided at cluster level which further given services to local goats and they delivered 565 male bucks which yields Rs. 22,60,000/- as an Income.



Breeding Buck & Goats

TRAINING & CAPACITY BUILDING

(1) Mahila Mela was organized and a creative and innovative women was honored in front of all villages at Cluster level & district level form her maximum interest in project and making it success.



(2) Training and Development activities on Kharif, Rabi & Zayad as well as for Mandap Vegetable cultivation to 1000 farmer families.

(3) 89 Local Community Facilitation programmes were organized , Training & Demonstration for 25 Farmers, 100 number of Farmer's Exposure Visits @ 10 farmers per Visit was also organized during the entire project tenure, 55 Training programmes to Facilitators / participants, 27 Capacity building Workshops were organized.



RESULTS OF WADI

- (1) An average of 220 kg Amla was produced per WADI which was 2,55,570 kg in total since 2010-2014 which was sold out in market and participating families received an amount of Rs. 19,07,150/-. 1950 kg Amla was used as domestic consumption.
- (2) 1,13,100 kg Mango fruits were produced between 2010-2013 which gives Rs.26,00,700/- as Income.
- (3) 23595 kg Guava was produced in year2010- 2013 sold out@ Rs.15/- per kg and received an amount of Rs. 3,53,925/-
- (4) 3000 kg Lemon was produced in project year sold out @ 10/-& received an amount of 30,000/-
- (5) 1900 kg Pomegranate sold out @ 50/- & received 95,000/-



**Lemon
Production
with an
Excellent
Quality**

